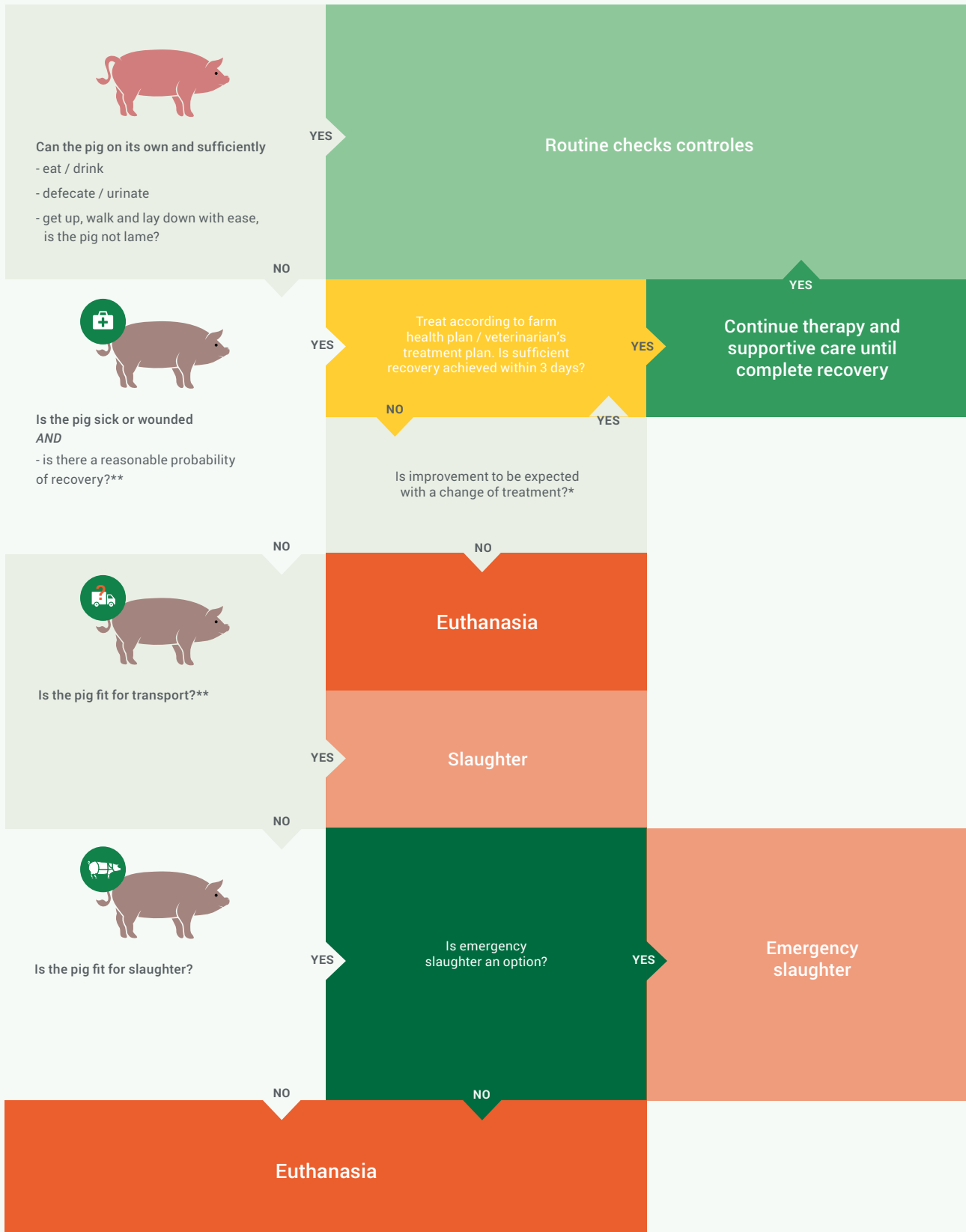


ON FARM DECISION TOOL FOR PIGS IN NEED OF CARE

for pigs ± 2 months and older



* Consult your veterinarian in case of doubt.

** Judgement of fitness for transport and slaughter at the abattoir is leading.



ON FARM DECISION TOOL FOR PIGS IN NEED OF CARE

for pigs \pm 2 months and older

Each farmer is responsible for on-farm euthanasia of their animals, according to EC Directive 1099/2009.

This decision tool supports the farmer with decision making.

Next to making a well founded decision, the farmer needs to:

- choose an appropriate and legal method for euthanasia
- prevent avoidable pain, stress and suffering
- only let skilled and trained persons perform euthanasia
- record all working procedures

Sick or injured animals require adequate care, including appropriate housing for such animals, matching the severity of the condition. For example, relocating the animal to a designated pen, providing a physical and social safe environment with soft flooring and adequate supply of feed and water.

Recording cases of disease and euthanised animals is recommended, so the information can be used for developing and updating farm health plans.

The decision tool is developed by the steering group Decision support tool for pigs, coordinated by Anette van der Aa (Anoxia) and Tijs Tobias (Utrecht University), in collaboration with the Royal Netherlands Veterinary Association (KNMVD), the Dutch Pig Producers Organisation (POV) and CenSAS (Centre for Sustainable Animal Stewardship, a cooperative of Utrecht University and Wageningen University & Research).

HEFT 2021

For more information on nitrogen gas stunning and how to obtain this technology, please visit our website www.heftinternational.com or write to info@heftinternational.com